



ATLANTIC

IRELAND  
Dublin

NORTHERN IRELAND  
Belfast

SCOTLAND  
Edinburgh

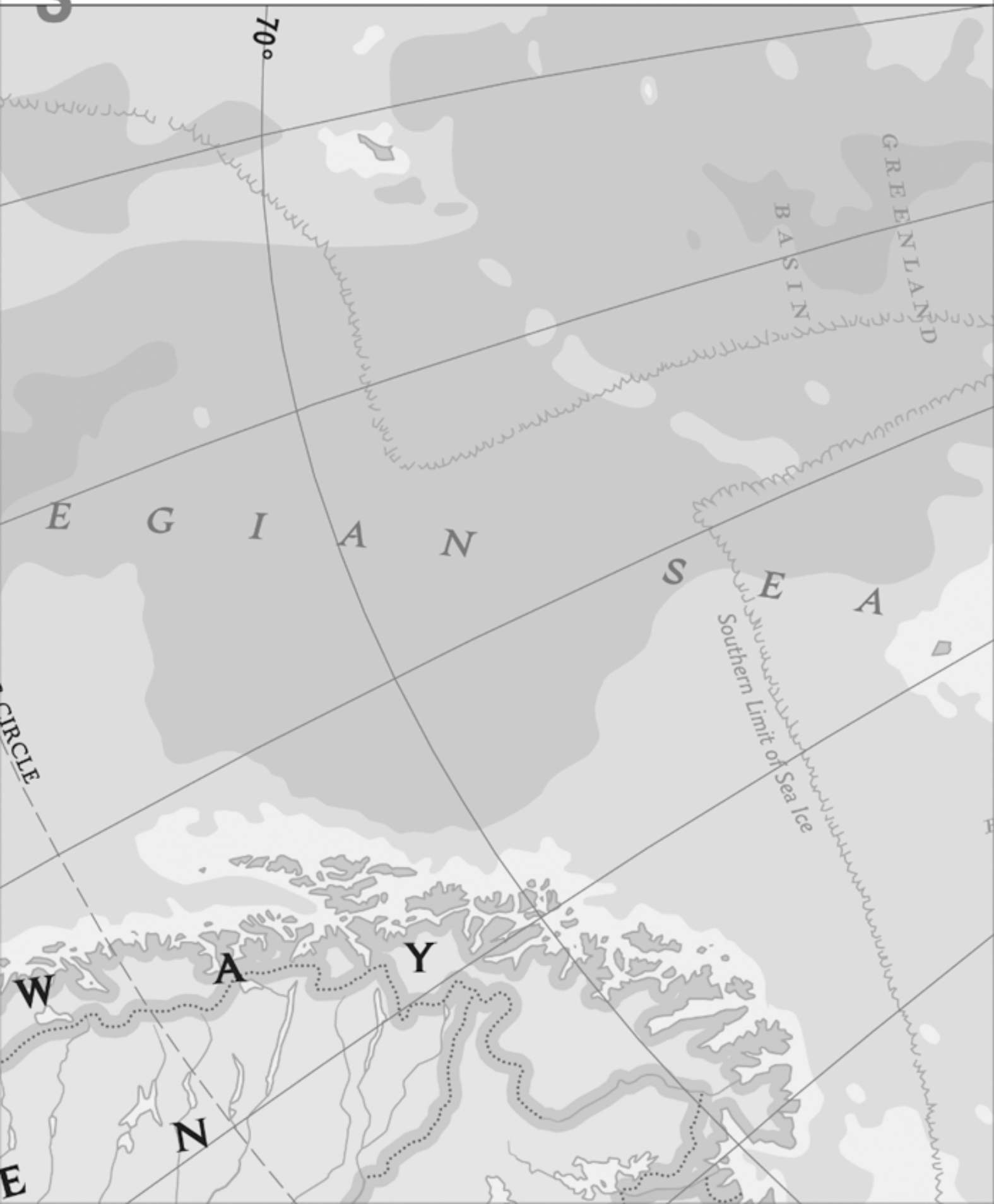
WALES  
Cardiff

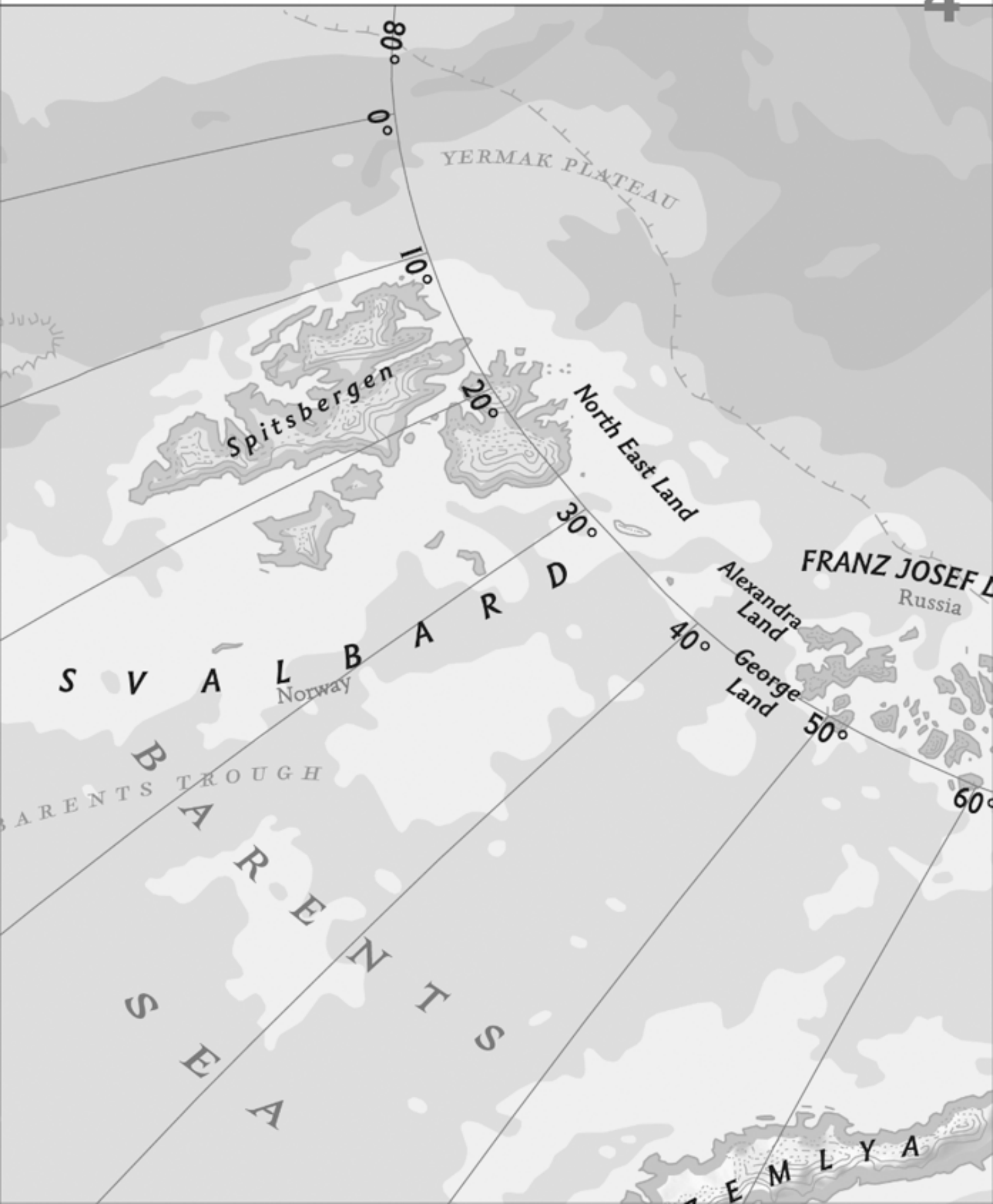
UNITED KINGDOM

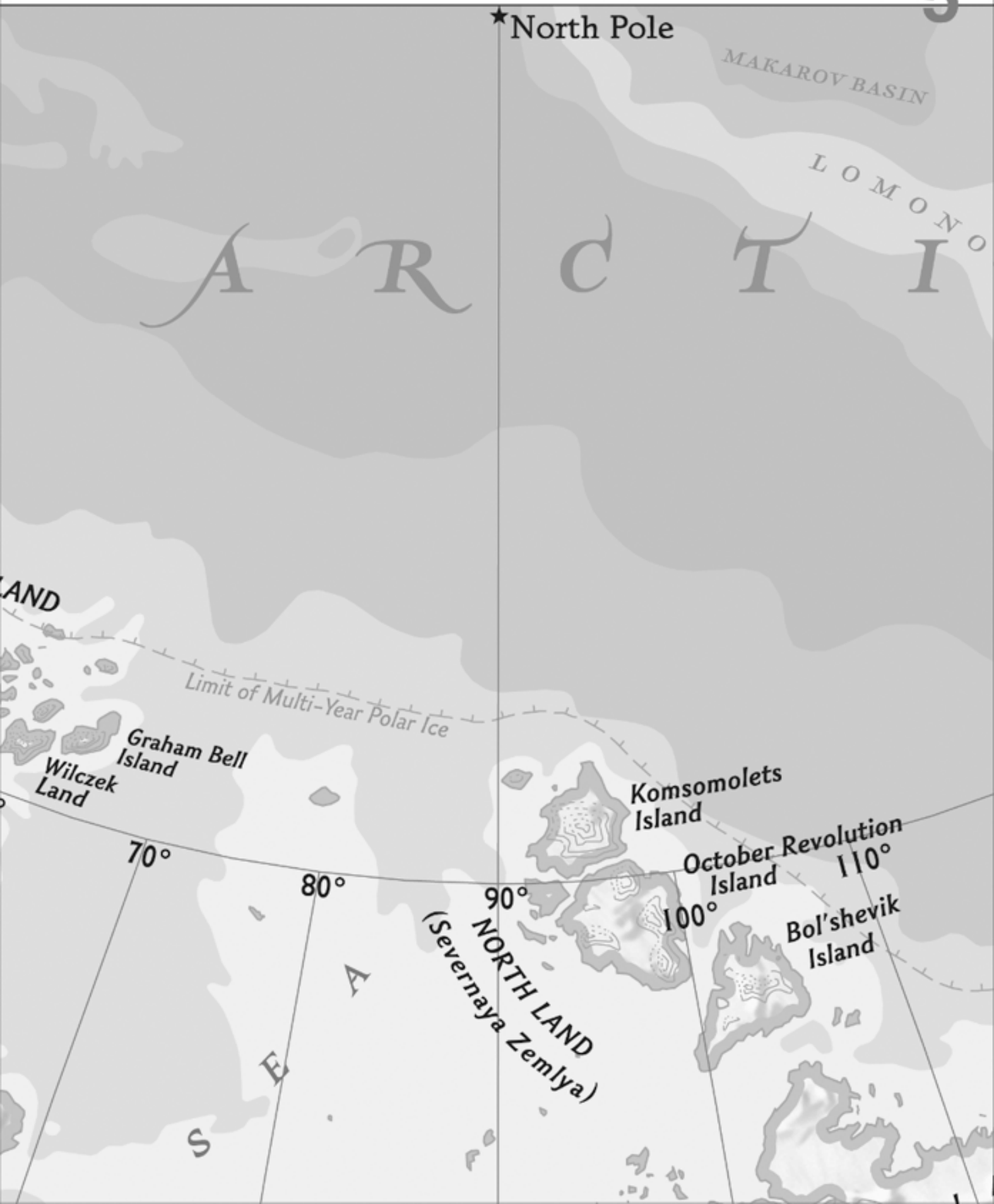
NOR



3







★ North Pole

MAKAROV BASIN

LOMONO

ARCTIC

AND

Limit of Multi-Year Polar Ice

Graham Bell Island

Wilczek Land

Komsomolets Island

October Revolution Island

Bol'shevik Island

70°

80°

90°

100°

110°

NORTH LAND  
(Severnaya Zemlya)

SEVERNA



ANJOU  
RIDGE

WRANGEL  
PLAIN

80°

180°

170°

160°

150°

140°

130°

120°

NEW SIBERIAN ISLANDS

ANJOU

ISLANDS

Kotel'nyy  
Island

Faddyevski  
Island

Novaya Sibir'  
Island

LYAKHOV  
ISLANDS

Bolshoi  
Lykhovskii  
Island

LAPTEV

SEA



Limit of Multi-Year Polar Ice

70°

CHUKCHI

SEA

Wrangel Island

Ayon Island

EAST SIBERIAN SEA

ARCTIC CIRCLE



A L A S K A

United States

60°

8

St. Lawrence  
Island

Nunivak  
Island

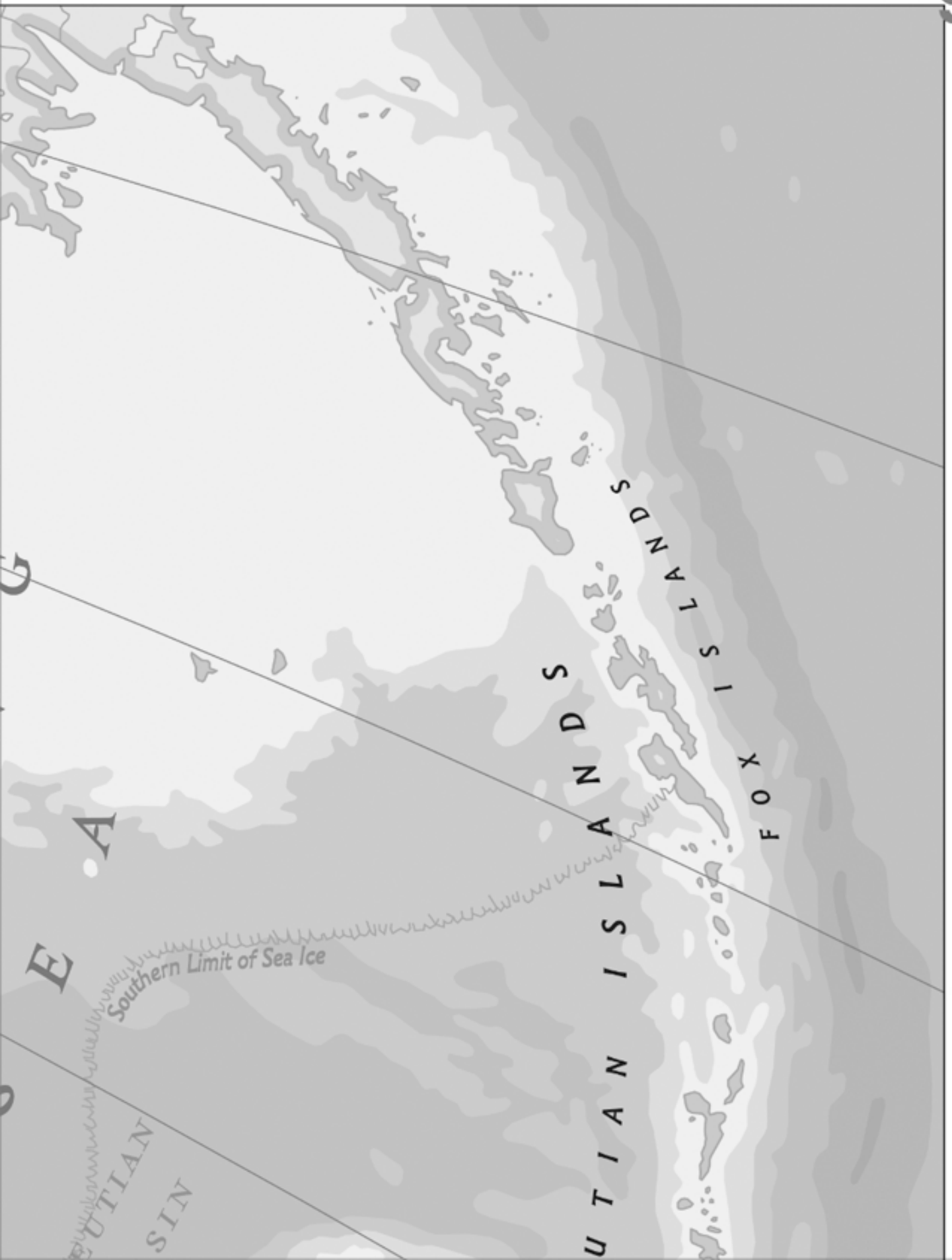
Ryuk  
Range

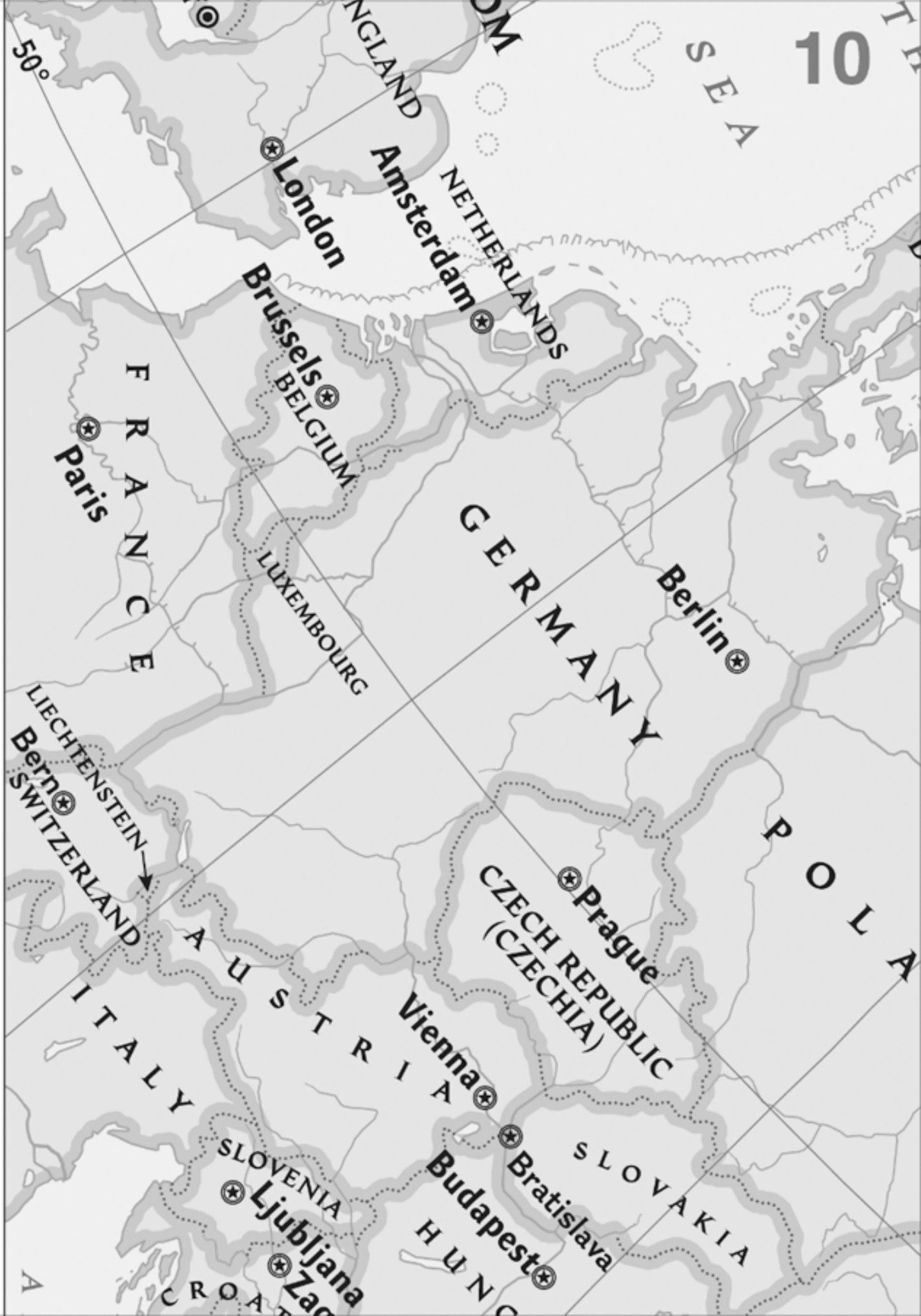
+8406 ft  
2562 m

Sunday  
Monday

BERING  
Date Line







50°

FRANCE

Paris

Brussels  
BELGIUM

LUXEMBOURG

Amsterdam

NETHERLANDS

GERMANY

Berlin

POLAND

LIECHTENSTEIN  
Bern  
SWITZERLAND

AUSTRIA

Vienna

Prague  
CZECH REPUBLIC  
(CZECHIA)

ITALY

SLOVENIA  
Ljubljana

Budapest

Bratislava

SLOVAKIA

A

CROATIA

HUNGARY

ENGLAND

BALTIC SEA



Oslo

D

E

W

GULF OF BOTHNIA

DENMARK

Copenhagen

Stockholm

Helsinki

Tallinn

ESTONIA

Riga

LITHUANIA

Russia  
Kaliningrad

Vilnius

Minsk

BELARUS

Warsaw

Moscow

N

D

12

OTHNIA

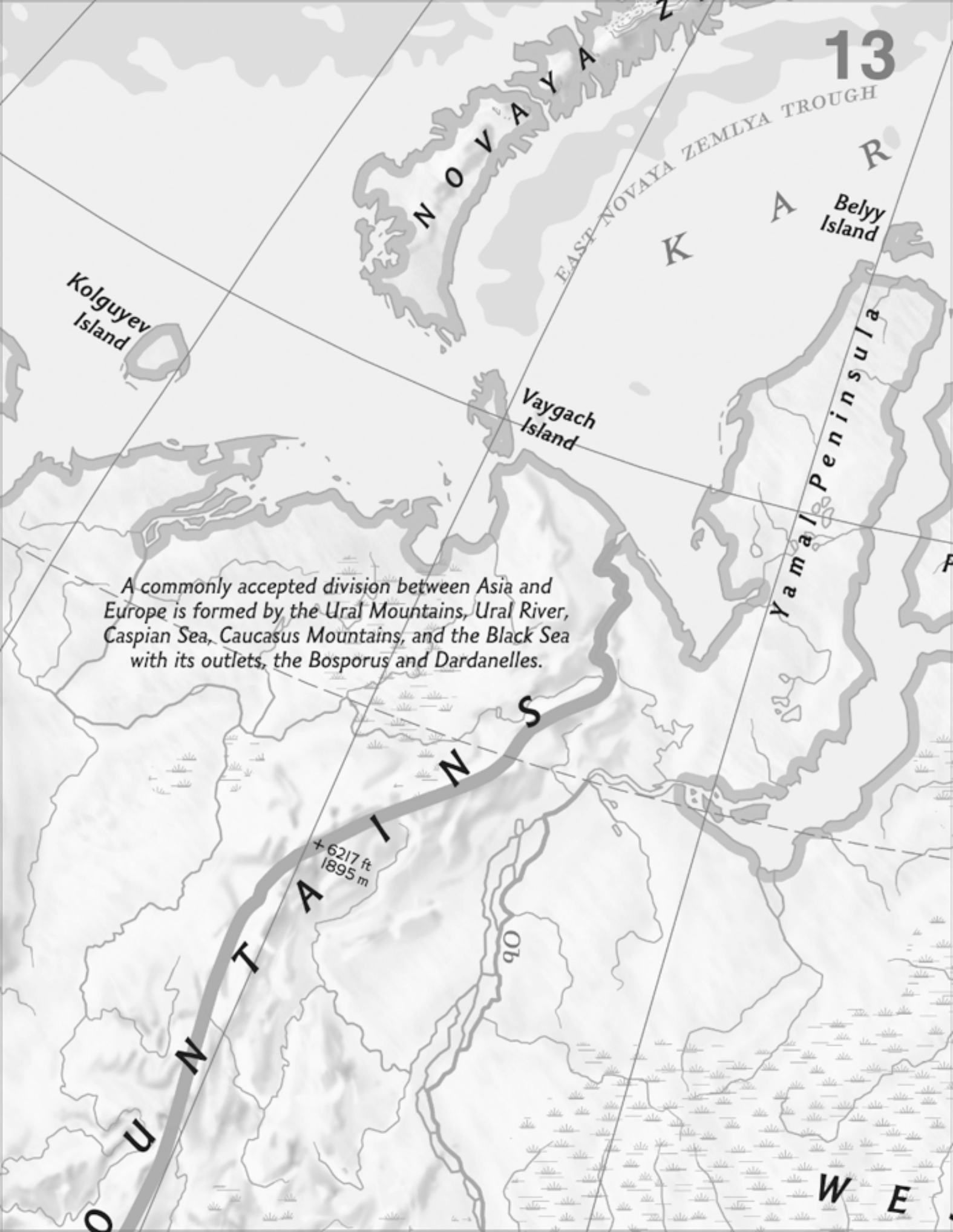
I N L A N D

Kola Peninsula  
WHITE SEA

St. Petersburg

R





A commonly accepted division between Asia and Europe is formed by the Ural Mountains, Ural River, Caspian Sea, Caucasus Mountains, and the Black Sea with its outlets, the Bosphorus and Dardanelles.

+6217 ft  
1895 m

90

14



3760  
1146 m

TAYMYR PENINSULA

Gyda Peninsula

Yenisey

ARCTIC CIRCLE

Lower Tunguska

CENTRAL

SIBERIA

SIBERIA

P



TURA

Verkhoyansk

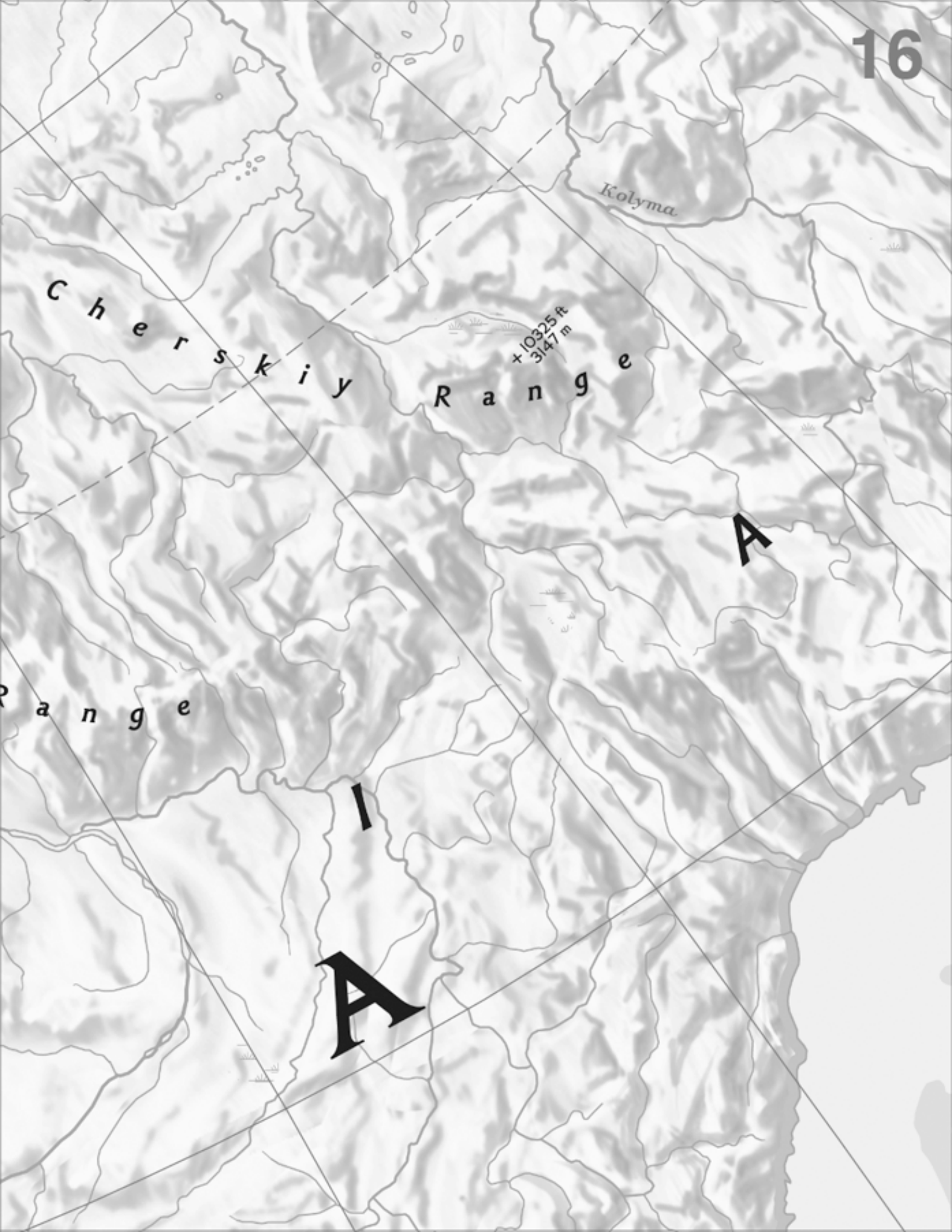
Lena

7838 ft  
+2389 m

UR

R

UR



Cherskiy

Range

Kolyma

+10325 ft  
3147 m

A

A

Range





К о л ы м а  
+6437 ft  
1962 m

К о

Karaginskiy  
Island

Ц е н т р а л ь н ы е

+15584 ft  
4750 m

KAMCHATKA  
PENINSULA

Р а б у н ь е

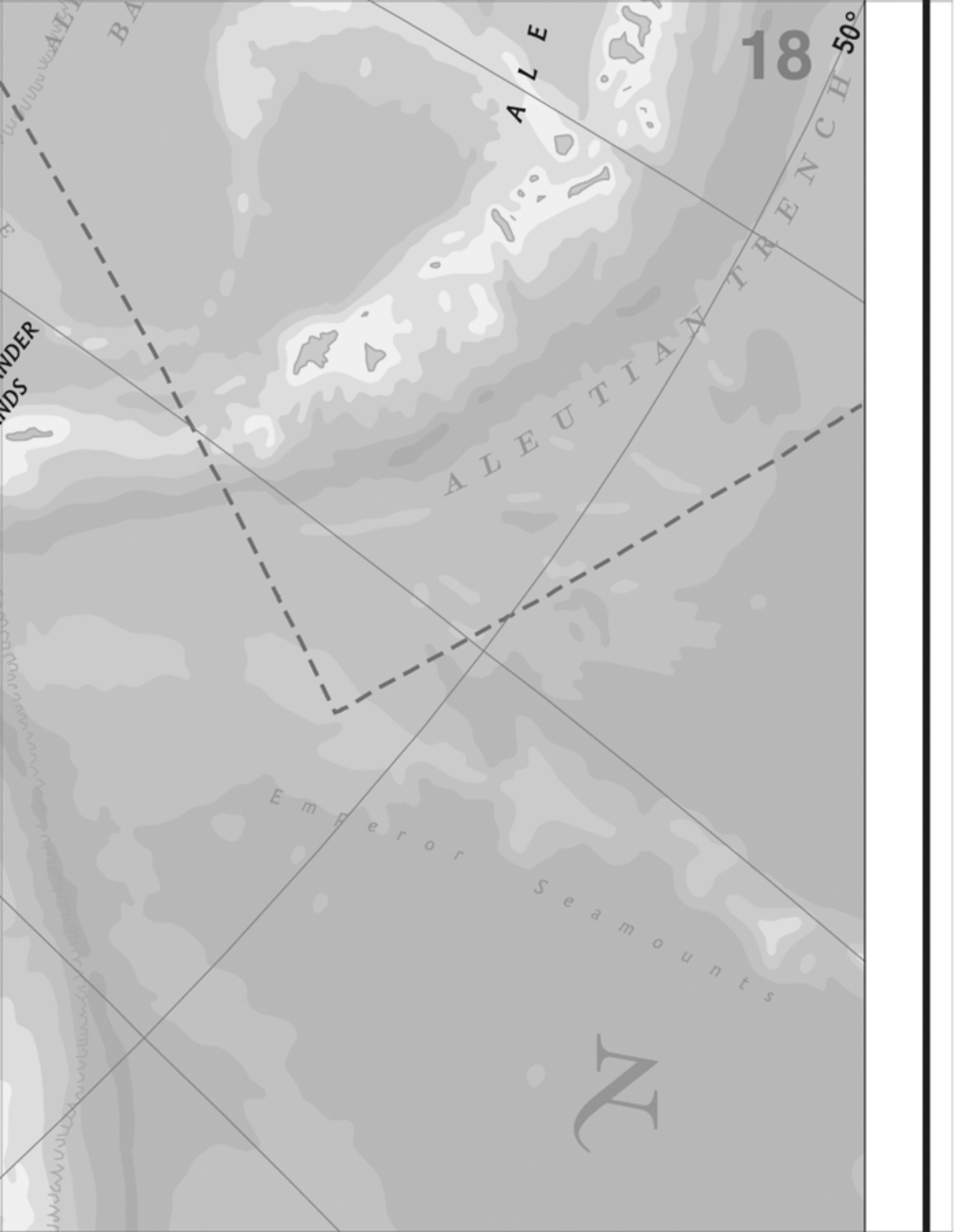
S E A  
O F  
O T S K

SHIRSHOV  
RI D G

Bering  
Island

COMMANDER  
ISLAND

mushir



BA

A L E

18

50°

UNDER  
LANDS

A L E U T I A N T R E N C H

E m p e r o r  
S e a m o u n t s

N